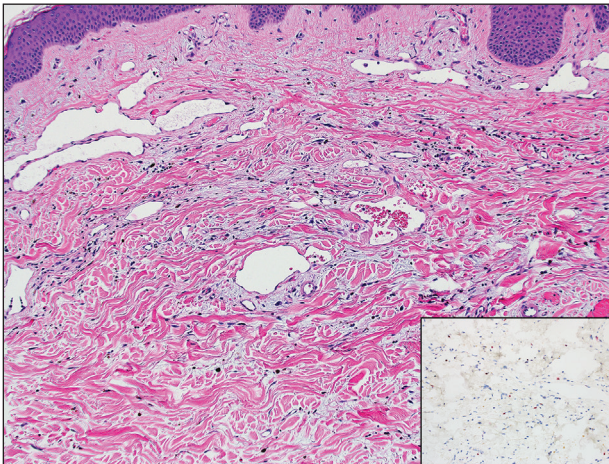


# Purpuric Macule of the Right Axilla

Andrew L.J. Dunn, MD; Brett H. Keeling, MD; Justin P. Bandino, MD; Dirk M. Elston, MD;  
John S. Metcalf, MD

## Eligible for 1 MOC SA Credit From the ABD

This Dermatopathology Diagnosis article in our print edition is eligible for 1 self-assessment credit for Maintenance of Certification from the American Board of Dermatology (ABD). After completing this activity, diplomates can visit the ABD website (<http://www.abderm.org>) to self-report the credits under the activity title "Cutis Dermatopathology Diagnosis." You may report the credit after each activity is completed or after accumulating multiple credits.



H&E, original magnification  $\times 100$  (Ki-67 immunostain, original magnification  $\times 100$  [inset]).

A 67-year-old woman presented with a lesion on the medial aspect of the right axilla of 2 weeks' duration. The patient had a history of cancer of the right breast treated with a mastectomy and adjuvant radiation. She denied pain, bleeding, pruritus, or rapid growth, as well as any changes in medication or recent trauma. Physical examination revealed a 5-mm purpuric macule of the right axilla. A punch biopsy was performed. Amplification for the *C-MYC* gene was negative by fluorescence in situ hybridization.

## THE BEST DIAGNOSIS IS:

- atypical vascular lesion
- hobnail hemangioma (targetoid hemosiderotic hemangioma)
- Kaposi sarcoma
- lymphangioma circumscriptum (superficial lymphangioma)
- radiation-induced angiosarcoma

PLEASE TURN TO **PAGE 29** FOR THE DIAGNOSIS

Dr. Dunn is from the Department of Pathology and Laboratory Services, University of Arkansas for Medical Sciences, Little Rock. Drs. Keeling, Bandino, Elston, and Metcalf are from the Medical University of South Carolina, Charleston. Drs. Keeling, Bandino, and Metcalf are from the Department of Pathology and Laboratory Medicine, and Dr. Elston is from the Department of Dermatology and Dermatologic Surgery. The authors report no conflict of interest.

Correspondence: Andrew L.J. Dunn, MD, Department of Pathology and Laboratory Services, University of Arkansas for Medical Sciences, 4301 W Markham St, Slot #517, Little Rock, AR 72205 ([adunnmd1986@gmail.com](mailto:adunnmd1986@gmail.com)).

## THE DIAGNOSIS: Atypical Vascular Lesion

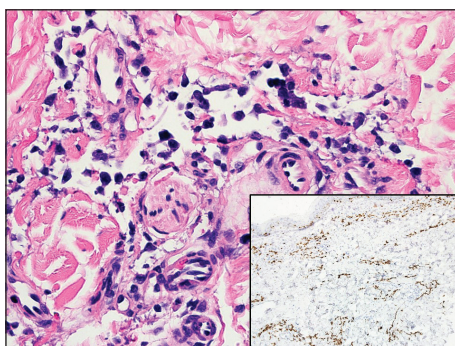
**A**typical vascular lesion (AVL)(quiz image), named by Fineberg and Rosen,<sup>1</sup> is a vascular lesion that arises on mammary skin with a history of radiation exposure. Clinically, AVL can present as a papule or erythematous patch that manifests 3 to 7 years after radiation therapy.<sup>2,3</sup> There are 2 histologic subtypes of AVL: lymphatic and vascular.<sup>2,4</sup> Lymphatic-type AVL is comprised of a symmetric distribution of thin, dilated, and anastomosing vessels usually found in the superficial and mid dermis. The vessels are lined by flat or hobnail protuberant endothelial cells that lack nuclear irregularity or pleomorphism; however, hyperchromatism of endothelial cell nuclei is a common finding. Vascular-type AVL is morphologically similar to a capillary hemangioma, and histologic features include irregular growth of capillary-sized vessels that extend to the dermis and subcutis.<sup>2,4</sup> Atypical vascular lesions are benign lesions but may be a precursor to angiosarcoma. Along with vascular markers, D2-40 typically is positive. Surgical excision with clear margins is recommended when the lesion is small.<sup>4,5</sup> Observation is more appropriate for extensive lesions.

Angiosarcoma can arise spontaneously or in association with radiation or chronic lymphedema. Given the shared risk factors and presentation with AVL, it is essential to differentiate angiosarcoma from AVL. Primary cutaneous angiosarcoma usually presents on the head of elderly patients as an ecchymotic patch or plaque with ulceration.<sup>4</sup> Secondary angiosarcoma may arise following radiation or chronic lymphedema (Stewart-Treves syndrome); however, some authors now prefer to consider lymphangiosarcoma arising in chronic lymphedematous limbs a distinct entity.<sup>6</sup> Surgical excision with wide margins is the mainstay of therapy, but angiosarcoma has high recurrence rates, and the 5-year survival rate has been

reported to be as low as 35%.<sup>7</sup> Histologic overlap with AVL includes dissecting anastomosing vessels lined by hyperchromatic nuclei; however, angiosarcoma is distinguished by endothelial cell layering, nuclear pleomorphism, and prominent nucleoli (Figure 1).<sup>4,8</sup> Increased positivity for Ki-67 immunostain, which indicates cell proliferation, may be used to distinguish angiosarcoma from an AVL (Figure 1 [inset]).<sup>9</sup> Further, in contrast to AVL, radiation-induced angiosarcoma is characterized by amplification of *C-MYC*, a regulator gene, and *FLT4* (FMS-related tyrosine kinase 4), a gene encoding vascular endothelial growth factor receptor 3. Gene amplification may be detected through immunohistochemistry or fluorescence in situ hybridization.<sup>10</sup> Ki-67 labeling showed less than 10% staining in endothelial cells in our case (quiz image [inset]), and fluorescence in situ hybridization was negative for *C-MYC* amplification, supporting the diagnosis of AVL.

Lymphangioma circumscriptum, the most common superficial lymphangioma, is a hamartomatous malformation that usually occurs at the axillary folds, neck, and trunk. It clinically presents as small agminated vesicles with a characteristic frog spawn appearance.<sup>11</sup> Dermoscopic features include yellow lacunae that may alternate with a dark red color secondary to extravasation of erythrocytes.<sup>12</sup> These clinical features often lead to a differential diagnosis of verrucae, angiokeratoma, and angiosarcoma. Lymphangioma circumscriptum histologically is characterized by an overgrowth of dilated lymphatic vessels that fill the papillary dermis. The vessels are composed of flat endothelial cells typically filled with acellular proteinaceous debris and occasional erythrocytes (Figure 2). As the lesion traverses deeper into the dermis, the caliber of the lymphatic channel becomes narrower. The presence of deep lymphatic cisterns with surrounding smooth muscle is helpful to differentiate lymphangioma circumscriptum from other lymphatic malformations such as acquired lymphangiectasia. Treatment options include surgical excision, sclerosing agents, and destructive modalities such as cryotherapy.

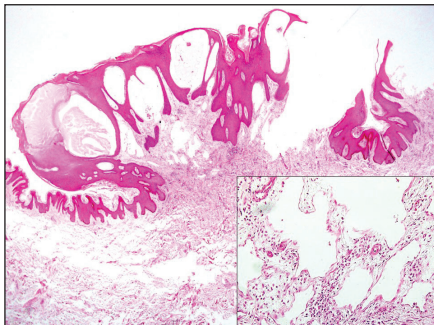
Hobnail hemangioma, originally termed *targetoid hemosiderotic hemangioma* by Santa Cruz and Aronberg,<sup>13</sup> presents as a violaceous papule or nodule surrounded by a characteristic brown halo on the leg. Trauma has been proposed as the inciting factor for the clinical appearance of hobnail hemangioma.<sup>14</sup> Microscopically, the lesion shows vessels in a wedge shape. The superficial component has telangiectatic vessels with focal areas of papillary projections lined by endothelial cells. Although the endothelial nuclei typically project into the lumen, the nuclei are small, bland, and without mitotic activity.<sup>15</sup> Deeper



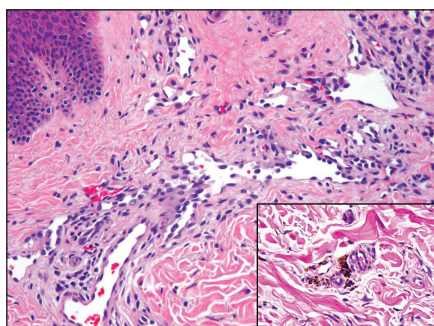
**FIGURE 1.** Hyperchromatic, enlarged, and irregular nuclei of endothelial vessels are characteristic features of angiosarcoma (H&E, original magnification  $\times 400$ ). Increased proliferation was noted by increased staining for Ki-67 (original magnification  $\times 100$  [inset]).

components show slit-shaped vasculature with dermal collagen dissection. Hemosiderin, extravasated red blood cells, and inflammation are found adjacent to the vessels (Figure 3). Given the benign nature, hobnail hemangiomas may be monitored.

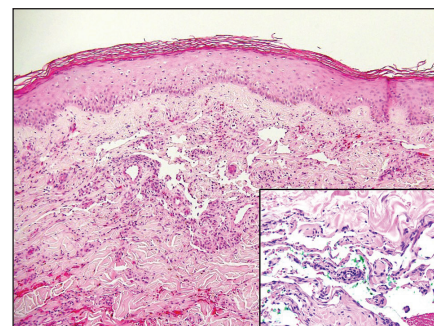
Kaposi sarcoma (KS) is a low-grade vascular neoplasm associated with human herpesvirus 8 that arises in multiple clinical settings, especially in immunosuppression



**FIGURE 2.** Lymphangioma circumscriptum histopathology showed the presence of dilated lymphatic vessels within the papillary dermis that can form superficial vesicles. Vascular caliber diminishes as the vessels go deeper into the dermis (H&E, original magnification  $\times 20$ ). Higher-power view (inset) shows the endothelial cells with no atypia (H&E, original magnification  $\times 200$ ).



**FIGURE 3.** Hobnail hemangioma with hemosiderin (H&E, original magnification  $\times 200$ ; inset, original magnification  $\times 200$ ).



**FIGURE 4.** Kaposi sarcoma with promontory sign, which involves the tumor growing into normal vasculature (H&E, original magnification  $\times 40$ ; inset, original magnification  $\times 200$ ).

secondary to human immunodeficiency virus. There are 3 distinct clinical stages: patch, plaque, and tumor. The patch stage appears as red macules that blend into larger plaques; the tumor stage is defined as larger nodules developing from plaques. Histologic features differ by stage. Similar to angiosarcoma, KS is comprised of anastomosing vessels that dissect collagen bundles; endothelial cell atypia is minimal. A useful feature of KS is its propensity to involve adnexa and display the promontory sign, which involves the tumor growing into normal vasculature (Figure 4).<sup>16</sup> Positive immunohistochemistry for human herpesvirus 8 aids in confirmation of the diagnosis. Treatment options for KS are numerous but include destructive modalities, chemotherapeutic agents such as doxorubicin, or highly active antiretroviral therapy for AIDS-related KS.<sup>17</sup>

## REFERENCES

1. Fineberg S, Rosen PP. Cutaneous angiosarcoma and atypical vascular lesions of the skin and breast after radiation therapy for breast carcinoma. *Am J Clin Pathol.* 1994;102:757-763.
2. Patton KT, Deyrup AT, Weiss SW. Atypical vascular lesions after surgery and radiation of the breast: a clinicopathologic study of 32 cases analyzing histologic heterogeneity and association with angiosarcoma. *Am J Surg Pathol.* 2008;32:943-950.
3. Billings SD, McKenney JK, Folpe AL, et al. Cutaneous angiosarcoma following breast-conserving surgery and radiation: an analysis of 27 cases. *Am J Surg Pathol.* 2004;28:781-788.
4. Lucas DR. Angiosarcoma, radiation-associated angiosarcoma, and atypical vascular lesion. *Arch Pathol Lab Med.* 2009;133:1804-1809.
5. Udager AM, Ishikawa MK, Lucas DR, et al. MYC immunohistochemistry in angiosarcoma and atypical vascular lesions: practical considerations based on a single institutional experience. *Pathology.* 2016;48:697-704.
6. Patterson JW, Hosler GA. *Weedon's Skin Pathology.* 4th ed. Philadelphia, PA: Elsevier; 2016:1069-1115.
7. Shin JY, Roh SG, Lee NH, et al. Predisposing factors for poor prognosis of angiosarcoma of the scalp and face: systematic review and meta-analysis. *Head Neck.* 2017;39:380-386.
8. Fraga-Guedes C, Gobbi H, Mastropasqua MG, et al. Clinicopathological and immunohistochemical study of 30 cases of post-radiation atypical vascular lesion of the breast. *Breast Cancer Res Treat.* 2014;146:347-354.
9. Shin SJ, Lesser M, Rosen PP. Hemangiomas and angiosarcomas of the breast: diagnostic utility of cell cycle markers with emphasis on Ki-67. *Arch Pathol Lab Med.* 2007;131:538-544.
10. Cornejo KM, Deng A, Wu H, et al. The utility of MYC and FLT4 in the diagnosis and treatment of postradiation atypical vascular lesion and angiosarcoma of the breast. *Hum Pathol.* 2015;46:868-875.
11. Patel GA, Schwartz RA. Cutaneous lymphangioma circumscriptum: frog spawn on the skin. *Int J Dermatol.* 2009;48:1290-1295.
12. Massa AF, Menezes N, Baptista A, et al. Cutaneous lymphangioma circumscriptum—dermoscopic features. *An Bras Dermatol.* 2015;90:262-264.
13. Santa Cruz DJ, Aronberg J. Targetoid hemosiderotic hemangioma. *J Am Acad Dermatol.* 1988;19:550-558.
14. Christenson LJ, Stone MS. Trauma-induced simulator of targetoid hemosiderotic hemangioma. *Am J Dermatopathol.* 2001;23:221-223.
15. Trindade F, Kutzner H, Tellechea O, et al. Hobnail hemangioma reclassified as superficial lymphatic malformation: a study of 52 cases. *J Am Acad Dermatol.* 2012;66:112-115.
16. Radu O, Pantanowitz L. Kaposi sarcoma. *Arch Pathol Lab Med.* 2013;137:289-294.
17. Di Lorenzo G, Di Trollo R, Montesarchio V, et al. Pegylated liposomal doxorubicin as second-line therapy in the treatment of patients with advanced classic Kaposi sarcoma: a retrospective study. *Cancer.* 2008;112:1147-1152.