

Derm Morphology, Part 1

Characterizing skin lesions by shape, size, color, and distribution is key to making the diagnosis. Can you tell which is which?

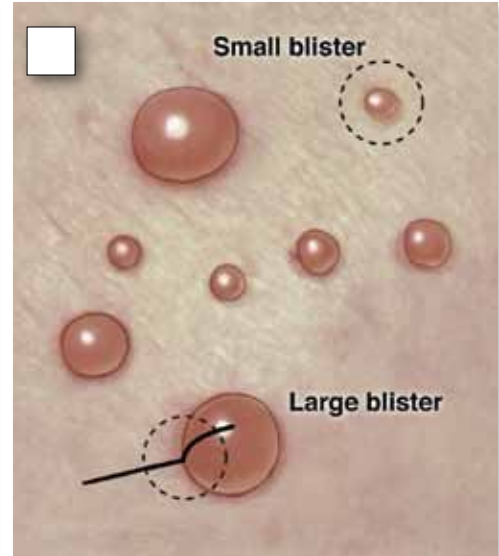
Watch for "Derm Morphology, Part 2" in our December 2015 issue!

Match the diagnosis to the photo by letter

- a. Nodules
- b. Hives (wheals)
- c. Pustules
- d. Bullae/vesicles



1. Raised, often itchy, red bumps on the surface of the skin, usually from an allergic reaction.



2. Large and small clear-fluid-filled blisters. Illustration by W. Kyle Cunningham, Biomedical Illustration Services at the University of Mississippi Medical Center (Jackson, Mississippi). Reprinted with permission from *Cutis*. 2015;95(4):237-240.



3. Small, inflamed, pus-filled, blister-like lesions on the skin surface, commonly found in acne.

Reprinted with permission from *Cutis*. 2014;94(1):13-16.



4. Solid or cystic raised bumps measuring more than 1 cm but less than 2 cm in width.

For the correct answers, go to www.clinicianreviews.com/articles/picture-this.html.